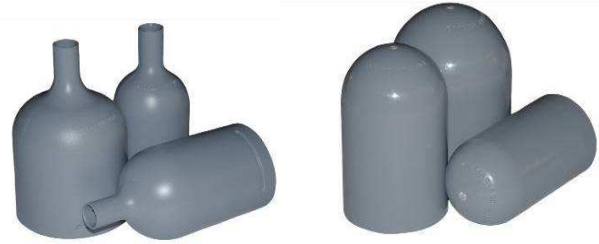


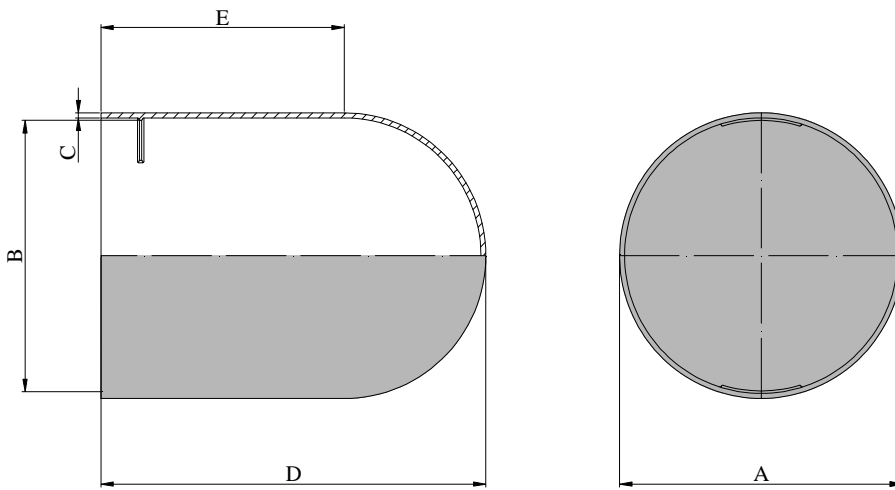


**END CAPS FOR PERMANENT GROUND ANCHORS**

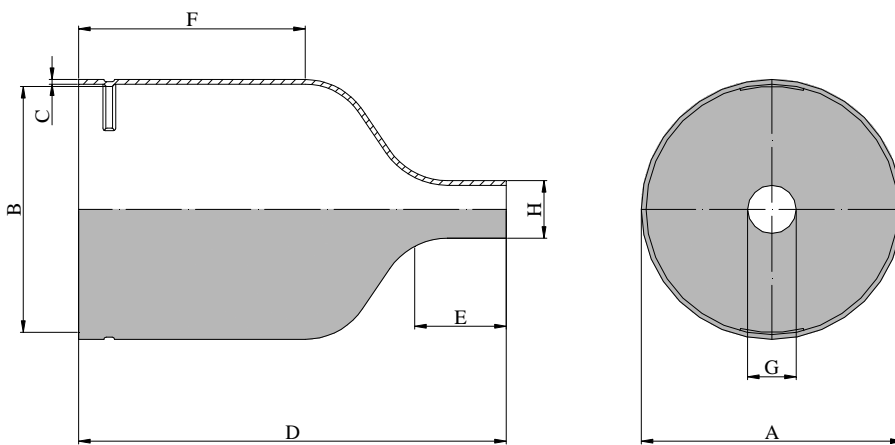


All permanent anchors have an end cap connected to the corrugated protection sheath. The plastic end cap is fixed to the corrugated sheath with a suitable tape to secure it and ease the insertion into the drilling hole.

**P2** closed end caps are designed for connecting onto D-IT corrugated sheaths and provided with a lock against removal, they are made of U.V. stabilized P.P. polypropylene, applications to **Ie** anchors.



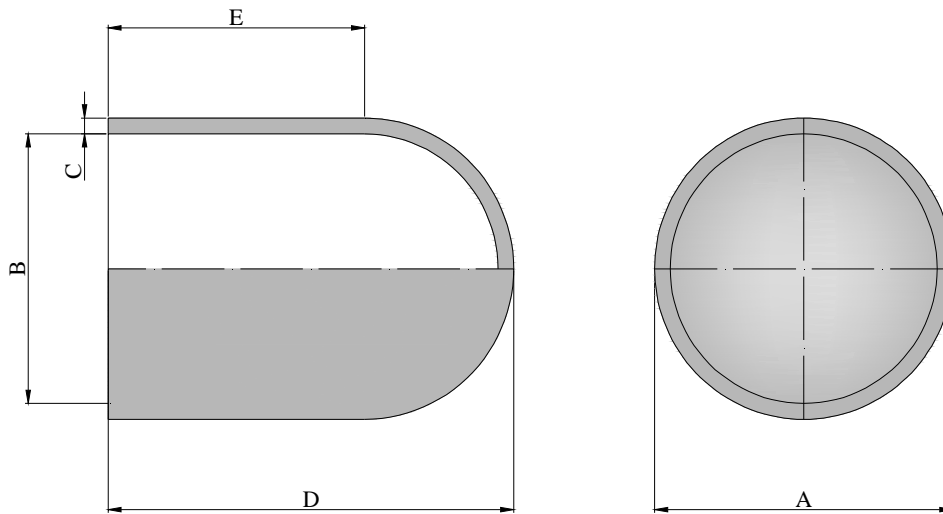
End cap type	A (mm)	B (mm)	C (mm)	D (mm)	E (mm)
DD 1090	73 ± 2.0	67 ± 2.0	2 ± 0.5	153 ± 3.0	117 ± 3.0
DD 1091	93 ± 2.0	87 ± 2.0	2 ± 0.5	153 ± 3.0	110 ± 3.0
DD 1092	114 ± 2.0	108 ± 2.0	2 ± 0.5	155 ± 3.0	100 ± 3.0



**P1** through end caps are designed for connecting onto D-IT corrugated sheaths and provided with a lock against removal, they are made of U.V. stabilized P.P. polypropylene, applications to **Ii** anchors.

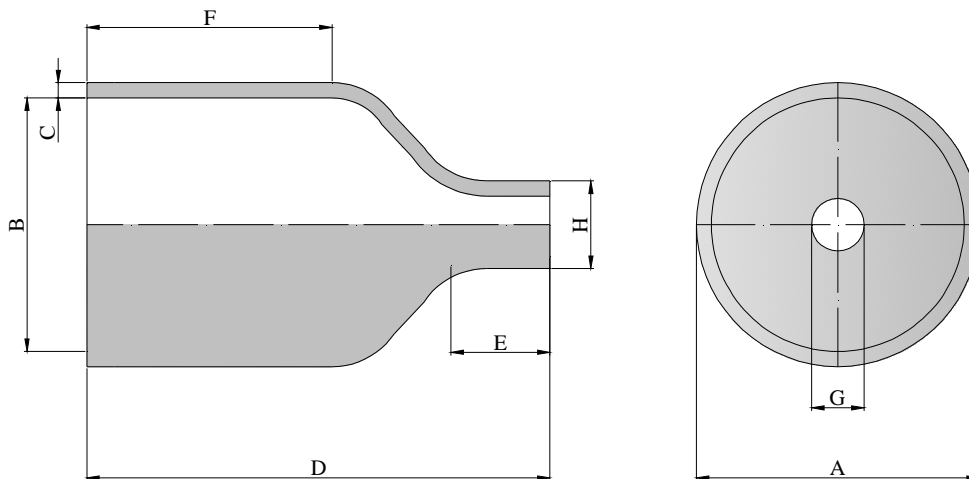
End cap type	A (mm)	B (mm)	C (mm)	D (mm)	E (mm)	F (mm)	G (mm)	H (mm)
DD 7032	79 ± 2.0	73 ± 2.0	2 ± 0.5	183 ± 3.0	45 ± 2.0	100 ± 3.0	22 ± 1.5	25 ± 1.5
DD 7033	93 ± 2.0	87 ± 2.0	2 ± 0.5	186 ± 3.0	45 ± 2.0	100 ± 3.0	22 ± 1.5	25 ± 1.5
DD 7034	110 ± 2.0	104 ± 2.0	2 ± 0.5	186 ± 3.0	45 ± 2.0	93 ± 3.0	22 ± 1.5	25 ± 1.5

**P3** closed end caps are designed for connecting onto DD-DK corrugated sheaths and provided with a lock against removal, they are made of U.V. stabilized P.P. polypropylene, applications to **Ie** anchors.



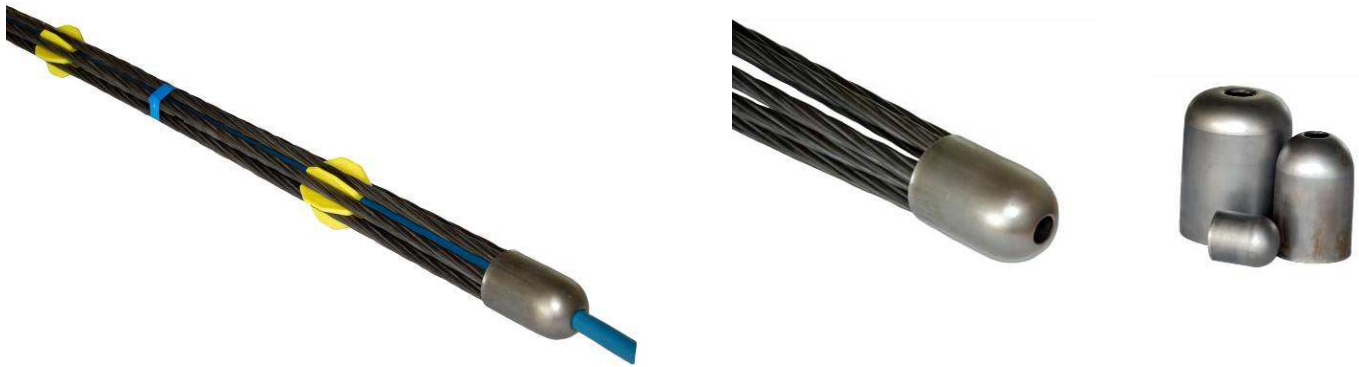
End cap Type	A (mm)	B (mm)	C (mm)	D (mm)	E (mm)
End cap DD 913	120 ± 1.0	108 ± 1.0	6 ± 1	155 ± 3.0	100 ± 3.0

**P4** through end caps are designed for connecting onto DD-DK corrugated sheaths and provided with a lock against removal, they are made of U.V. stabilized P.P. polypropylene, applications to **Ii** anchors.

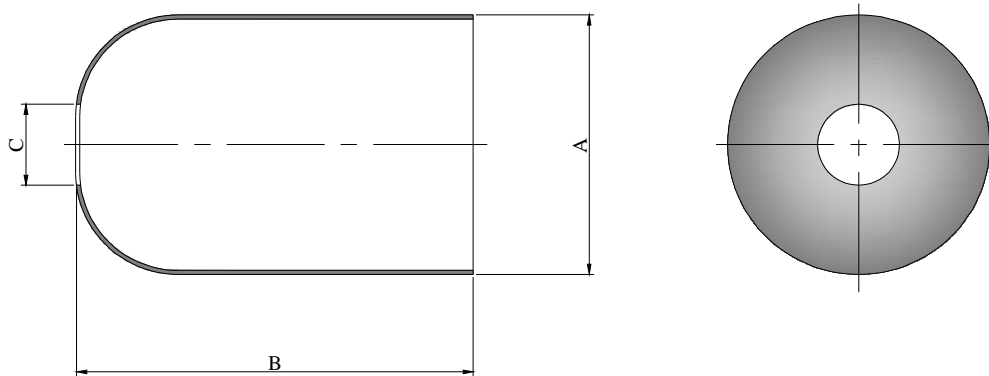


End cap Type	A (mm)	B (mm)	C (mm)	D (mm)	E (mm)	F (mm)	G (mm)	H (mm)
End cap DD 813	120 ± 1.0	108 ± 1.0	6 ± 1	186 ± 3.0	45 ± 2.0	95 ± 3.0	22 ± 1.5	34 ± 1

## END CAPS FOR TEMPORARY GROUND ANCHORS



All temporary anchors have a steel **DC 04 EN 10130** end cap connected to the strand at the end of the foundation by means of electric-welded points. The end cap is fixed to the strand to make the drilling easy to enter and to avoid damages to walls of the drilling hole.



End caps are provided of a hole on the tip as a standard to guarantee the passing of the 16x20 mm tube for the **II** primary grouting. The end cap cannot be welded to the strand by structural welding but only by light fixing welding. The strand cannot be structurally welded because of its high carbon content.

End cap	A	B	C	Weight/piece
	(mm)	(mm)	(mm)	(kg/pc.)
<b>T 90</b> steel end cap diam 89 mm (DC04 steel)	90 ±2.00	120 ±3.00	25 ±1.00	0.061
<b>T 60</b> steel end cap diam 64 mm (DC04 steel)	64 ±2.00	95 ±3.00	25 ±1.00	0.218
<b>T 40</b> steel end cap diam 40mm (DC04 steel)	40 ±2.00	50 ±3.00	----	0.065

