

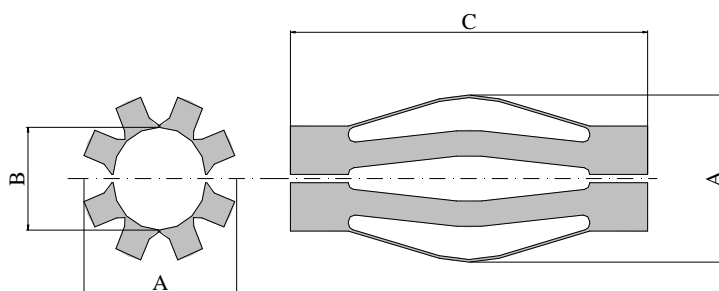


We offer centering systems of two types: **DD-EF** and **DD-ED**. They are supplied separately and must be installed on the permanent anchor before its installation on site, as agreed with the **Client's Technical Representative**. On the Client's request, anchors are supplied with centralizers that allow the anchor centering in the hole and a minimum of 10 mm grout cover to the borehole wall. Spacers/centralizers do not impede the grout flow and are manufactured from corrosion resistant materials.

DD-ED SPACER

The **DD-ED** spacer is supplied in two halves to reduce its volume. The outside dimension of the spacer is formed by loading and by fixing its two ends.




	Weight: 0,126 kg/pc. Colour: Grey
	Weight: 0,170 kg/pc. Colour: Grey
	Weight: 0,210 kg/pc. Colour: Grey

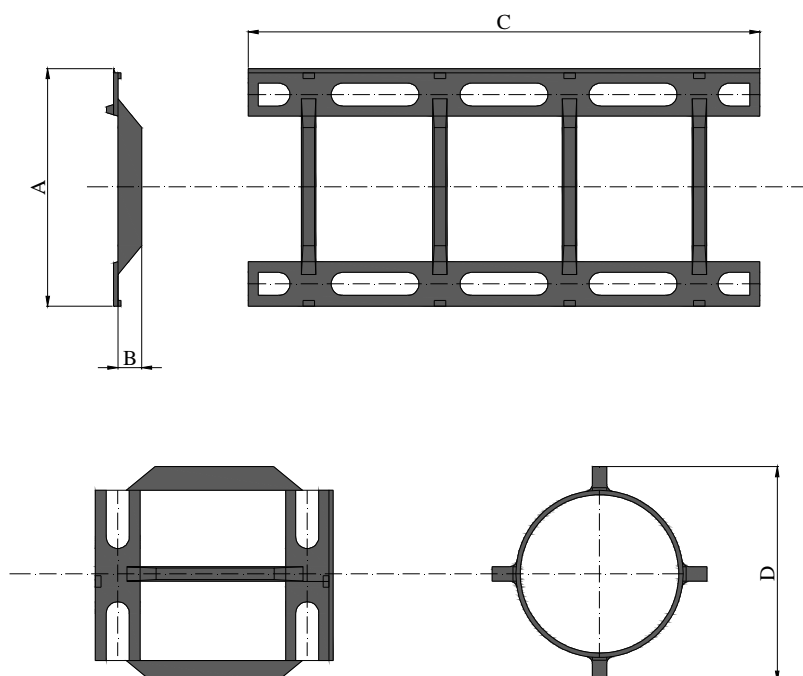


Type	Weight (kg/pz)	A (mm)	B (mm)	C (mm)
External spacer DD63ED	0,126	100 ± 10	60 – 65 ± 5	290 ± 5
External spacer DD75ED	0,170	110 ± 10	75 – 80 ± 5	290 ± 5
External spacer DD90ED	0,210	135 ± 10	90 – 95 ± 5	290 ± 5
External spacer DD100ED*	0,315	165 ± 10	110 – 120 ± 5	290 ± 5

* composed by three pieces from type DD90ED

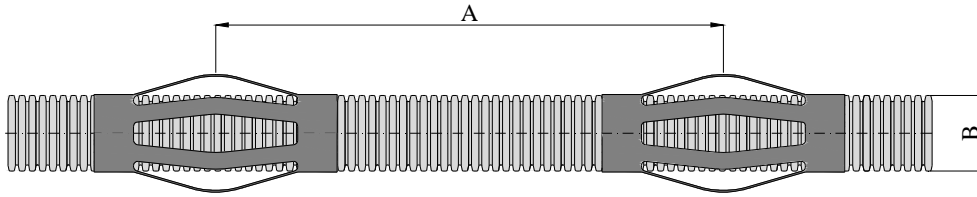
The **DD-ED** spacer is supplied in two halves to reduce its volume. The outside dimension of the spacer is formed by loading and by fixing its two ends.

	Weight: 0,080 kg/pc. Colour: Black
	Weight: 0,095 kg/pc. Colore: Black
	Weight: 0,105 kg/pc. Colour: Black



Type	Weight (kg/pz.)	A (mm)	B (mm)	C (mm)	D (mm)
Spacer DD75EF	0,070	165 ± 3	13 ± 3	240 ± 5	101 ± 3
Spacer DD90EF	0,090	170 ± 3	13 ± 3	290 ± 5	116 ± 3
Spacer DD110EF	0,097	165 ± 3	18 ± 4	357 ± 5	146 ± 3

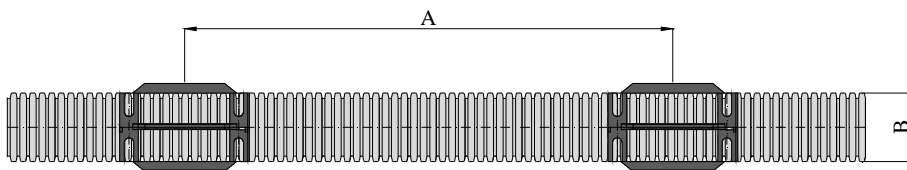
DD-ED STEP SPACER



The pitch between the spacers by varying the number of strands and in function of the diameter of the sheath adopted.

Spacer type DD-ED	Number of strands													
	2	3	4	5	6	7	8	9	10	11	12	13	14	15
	Step spacers (A) in meters \pm 10 cm													
Sheath D-75IT	1,50	1,00	1,00	0,90	0,90	/	/	/	/	/	/	/	/	/
Sheath D-90IT	/	/	/	/	1,00	1,00	1,00	/	/	/	/	/	/	/
Sheath D-110IT	/	/	/	/	/	/	1,00	1,00	1,00	1,00	1,00	1,00	1,00	1,00

PASSO DISTANZIATORI ESTERNI DD-EF



The pitch between the spacers by varying the number of strands and in function of the diameter of the sheath adopted.

Spacer type DD-EF	Number of strands													
	2	3	4	5	6	7	8	9	10	11	12	13	14	15
	Step spacers (A) in meters \pm 10 cm													
Sheath D-75IT	1,25	0,75	0,75	0,65	0,65	/	/	/	/	/	/	/	/	/
Sheath D-90IT	/	/	/	/	0,75	0,75	0,75	/	/	/	/	/	/	/
Sheath D-110IT	/	/	/	/	/	/	0,75	0,75	0,75	0,75	0,75	0,75	0,75	0,75