



TPR-04 TEMPORARY GROUND ANCHORS



Temporary TPR-04 ground anchors are produced in compliance with the **Ministerial Decree as of 14.01.2008, Decree no. 12391 22.12.2011** and with the European and Italian Standards.

The **TPR-4** ground anchor is usually used in the construction of bulkheads and diaphragms, where the type of ground needs temporary anchors to be used with repeated and selective grouting (**I.R.S.**).

The **TPR-04** ground anchors are defined temporary as their expected design life is under two years.

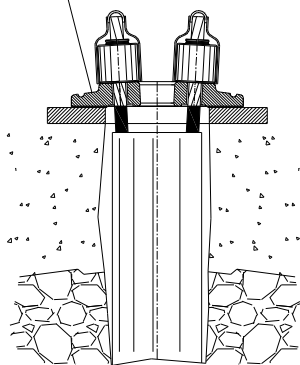


The anchor is made as follows:

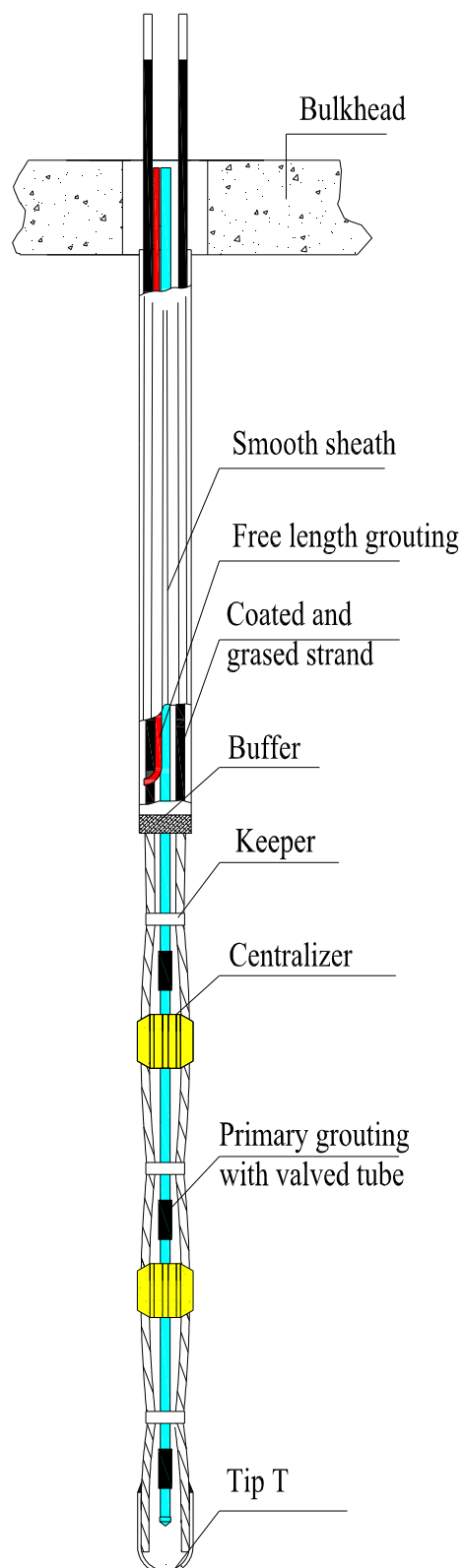
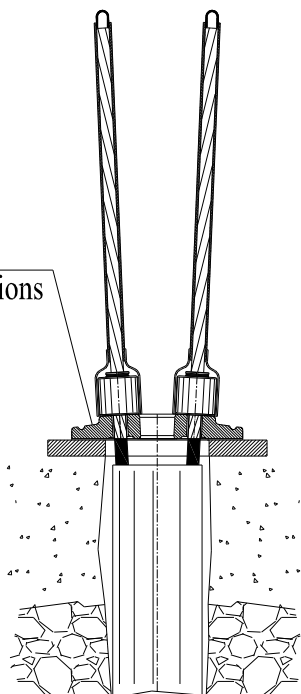
- In the active part, the strands are separated by special spacers which guarantee the tendon to maintain a sinusoidal shape. By means of suitable strapping and/or taping, the sinusoidal shape of the tendon increases the adherence with the foundation cement mix. Grouting takes place via a T001 27/34 mm tube (Max. applicable pressure **46 bar at 40°C - 70 bar at 40°C** burst pressure),
- The end part of the anchor is provided with a steel ogive to ease its insertion into the drilling hole.
- The separation of the free length from the active part is achieved by way of a buffer of sealing material, which allows both parts to be perfectly hermetic.
- The free length is protected by greasing and sheathing each single strand by means of 16x19.5 mm tubes and the insertion of a single sheath.
- Centralizers inserted into the foundation with a 1.5 m pitch.

TPR-04A TEMPORARY GROUND ANCHORS (Installed with TTR-E type anchor)

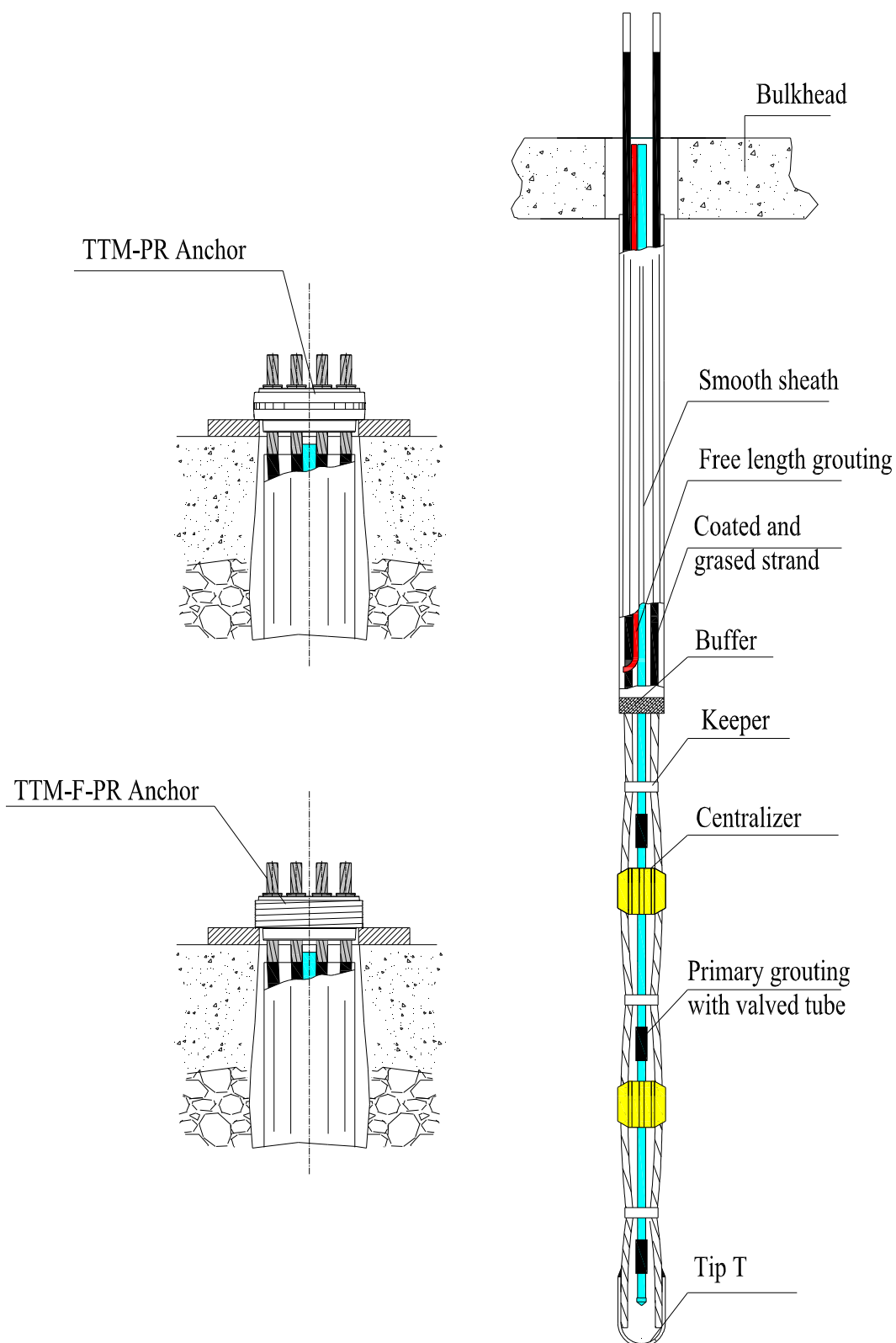
TTR-E Anchor
elementary protections
not ritesabile



TTR-E Anchor
elementary protections
ritesabile

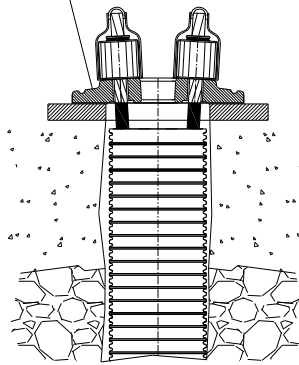


TPR-04A TEMPORARY GROUND ANCHORS (Installed with TTM and TTM-F type anchor)

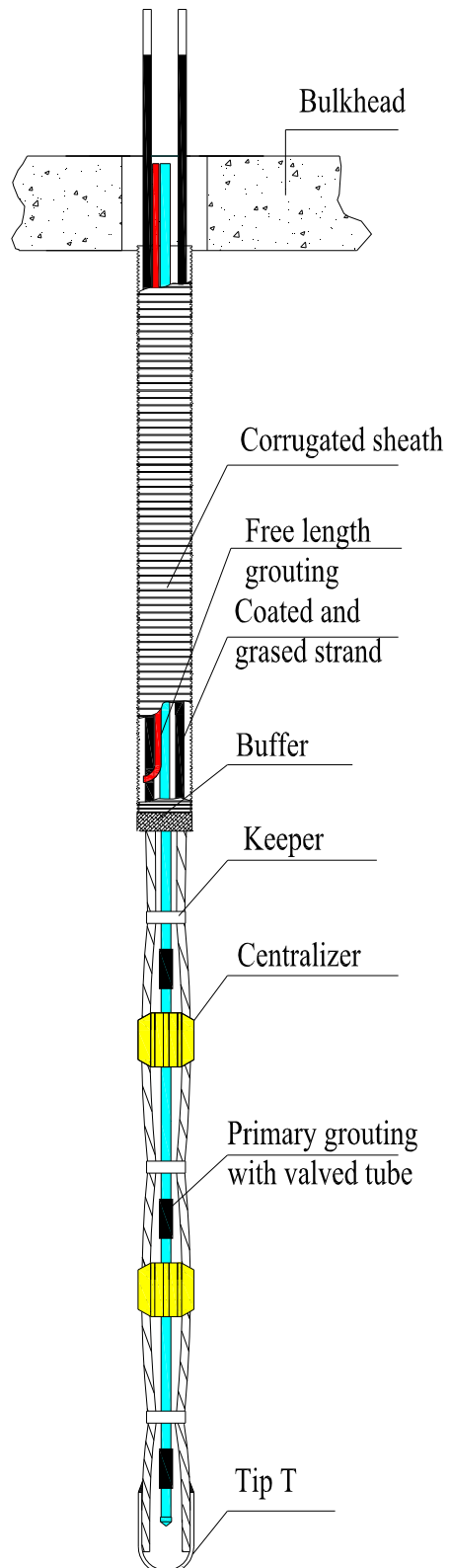
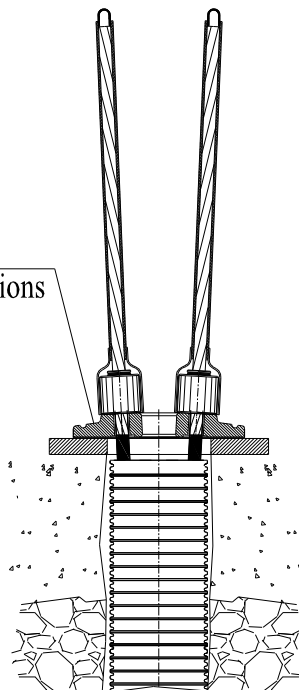


TPR-04B TEMPORARY GROUND ANCHORS (Installed with TTR-E type anchor)

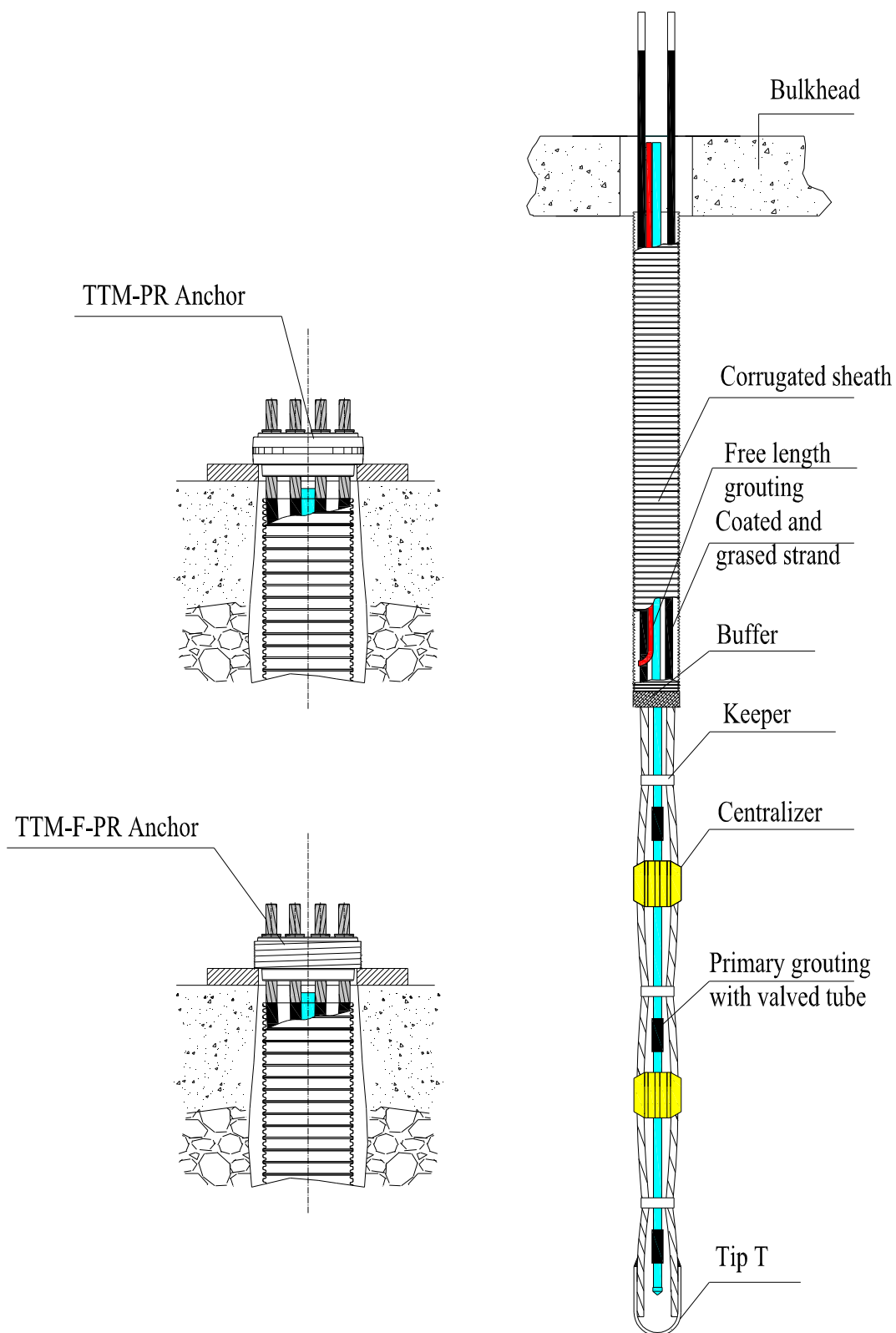
TTR-E Anchor
elementary protections
not ritesabile



TTR-E Anchor
elementary protections
ritesabile

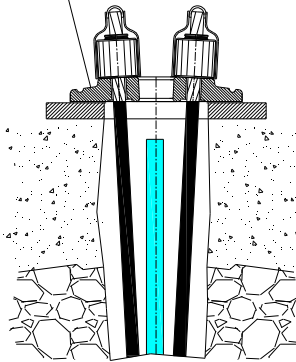


TPR-04B TEMPORARY GROUND ANCHORS (Installed with TTM and TTM-F type anchor)

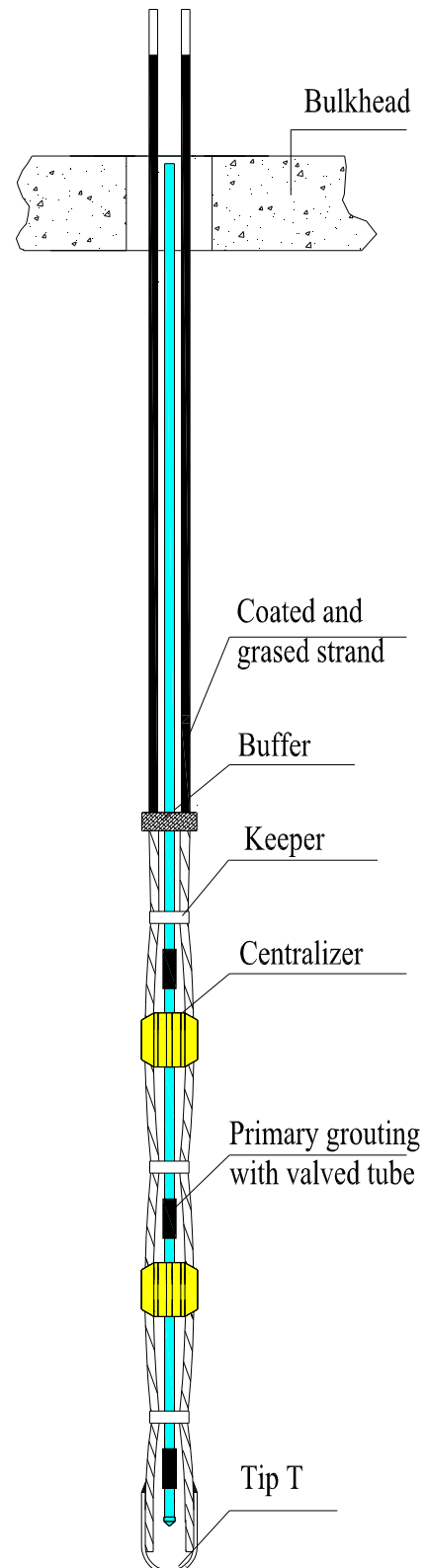
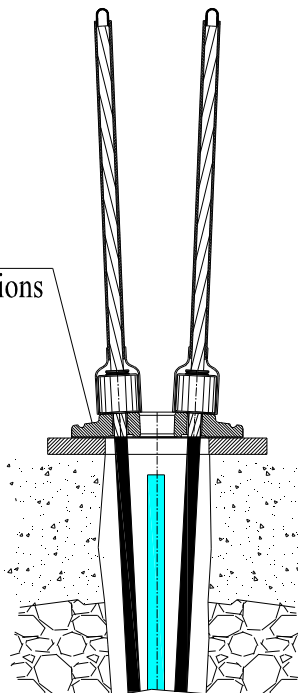


TPR-04C TEMPORARY GROUND ANCHORS (Installed with TTR-E type anchor)

TTR-E Anchor
elementary protections
not ritesabile



TTR-E Anchor
elementary protections
ritesabile



TPR-04C TEMPORARY GROUND ANCHORS (Installed with TTM and TTM-F type anchor)

