



### "G" CONNECTIONS



19G15 coupling plate

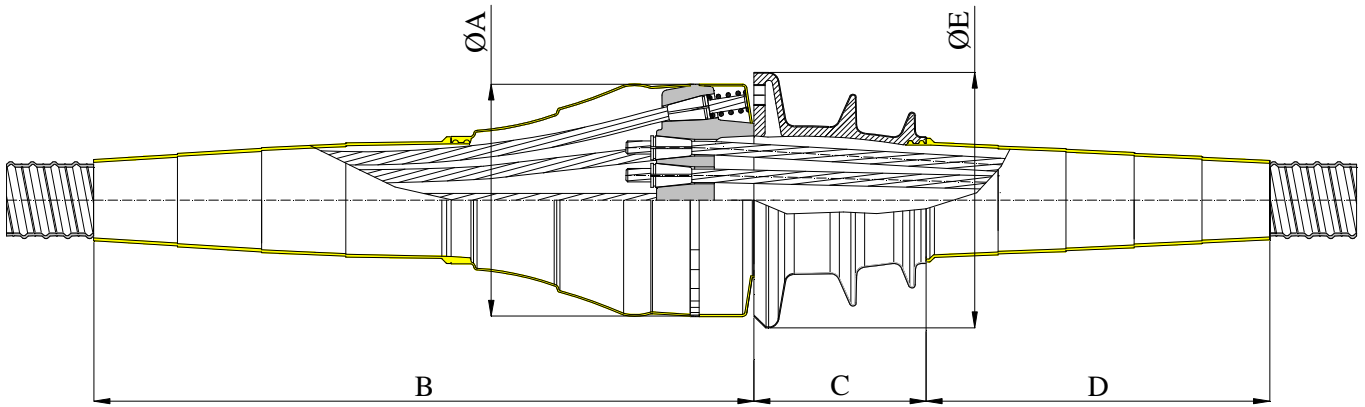
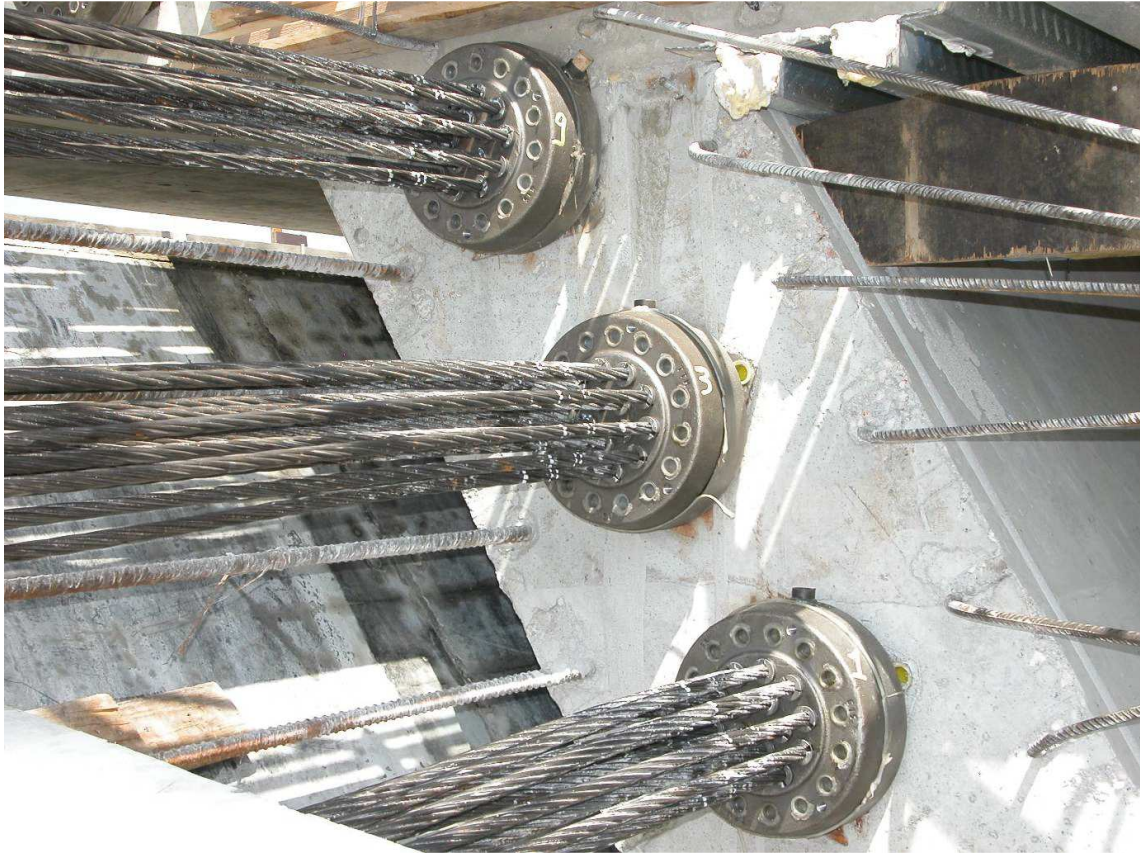
The "G" connection is made of the following parts: casting, anchor plate and connection, wedges, restressing metallic connection and H.D.P.E. or steel connection.

Castings have a turned plane for the plate, holes for connection to cap and formwork and a threaded grouting hole. Castings are in spheroid cast iron EN-GJS 500-7 EN-JS-1050, which offers a high resistance to stress. Being weldable, it guarantees the maximum safety during installation.

Strands are blocked on a distribution plate with truncated cone holes in steel C40-45 UNI EN 10083/1 and by means of wedges in steel 16NiCr4Pb UNI EN 10277-4.

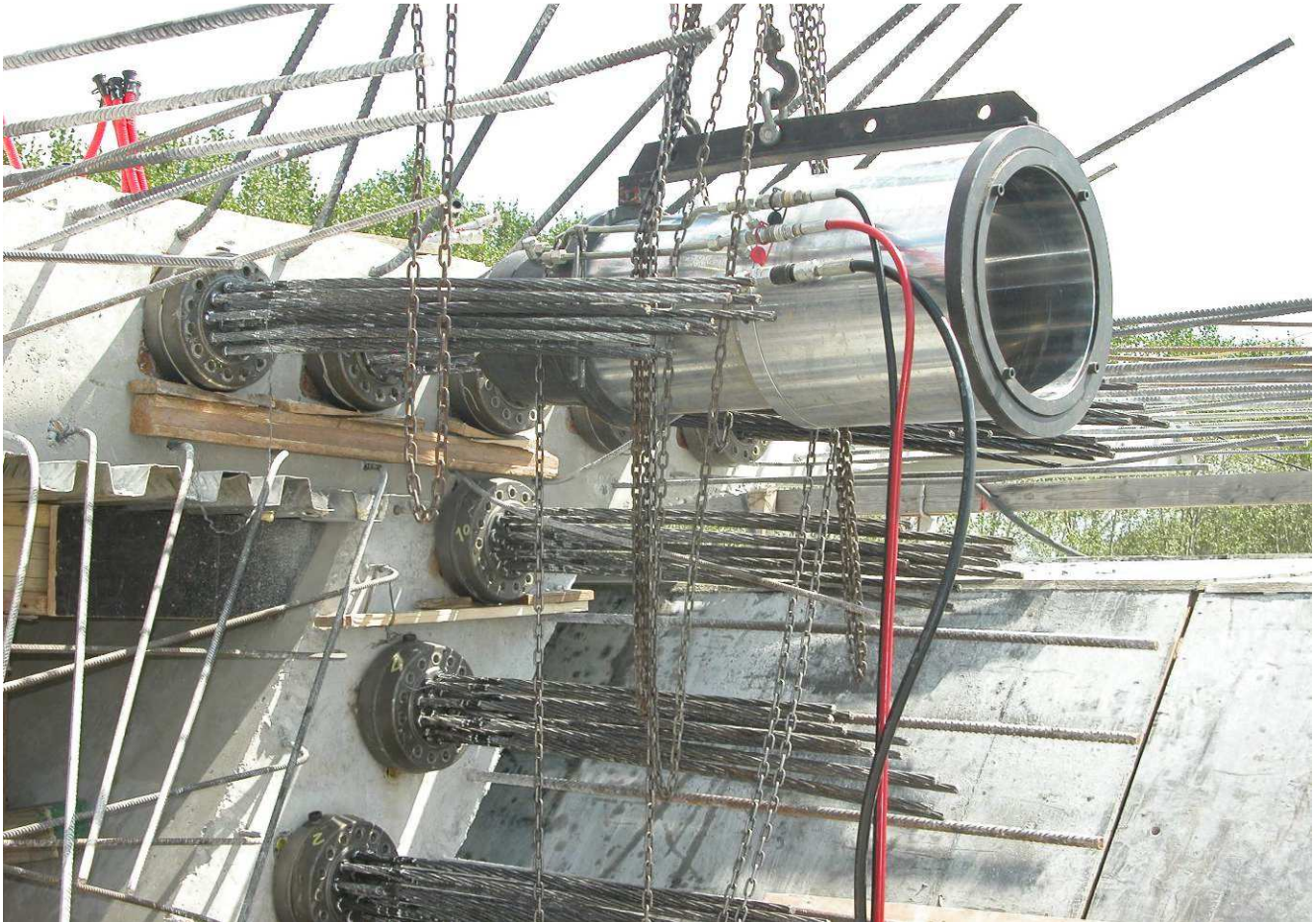
The anchorage and the sheaths are connected by means of a truncated cone connection that guarantees a correct deviation of the strands, minimizing the values of losses. The connection is made of H.D.P.E.





Type	A (mm)	B (mm)	C (mm)	D (mm)	E (mm)	Sheath diam. (mm)
<b>4G15</b>	155	400	103	300	160	45-50
<b>7G15</b>	215	450	133	340	200	62/67
<b>9G15</b>	235	550	175	350	235	72/77
<b>12G15</b>	248	650	185	385	265	80/85
<b>15G15</b>	265	750	197	430	290	85/90
<b>19G15</b>	280	880	215	430	320	95/100
<b>22G15</b>	315	1000	240	490	355	100/105
<b>27G15</b>	340	1150	277	500	380	110/115

All castings have threaded holes on the plane to allow an easy fixing to the formwork by means of bolts. All castings have a gas threaded hole for grouting to allow the connection to the several solutions available for grouting.



### "G" connections - Application details



Assembled coupler

The coupler is made of a forged plate where tensioning and restressing holes are made. Strands are restressed by means of a spring mechanisms which restrains the strand when it is inserted into the external holes. Restressing wedges with springs are protected by a steel casing which makes them tight.



19G15 coupler



