



**RECESSES FOR SINGLE STRAND ANCHORAGES**

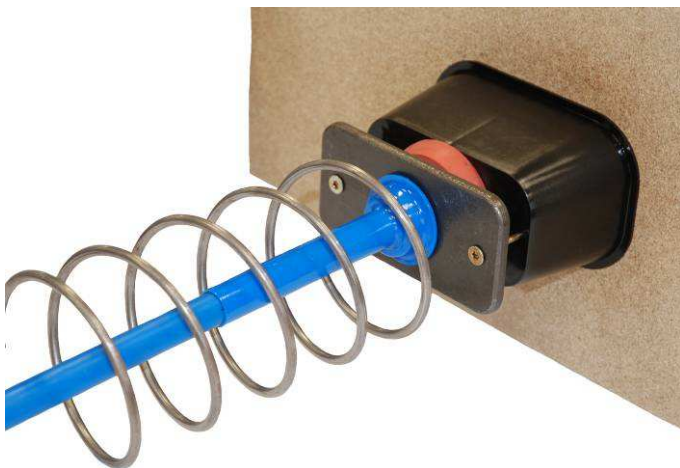
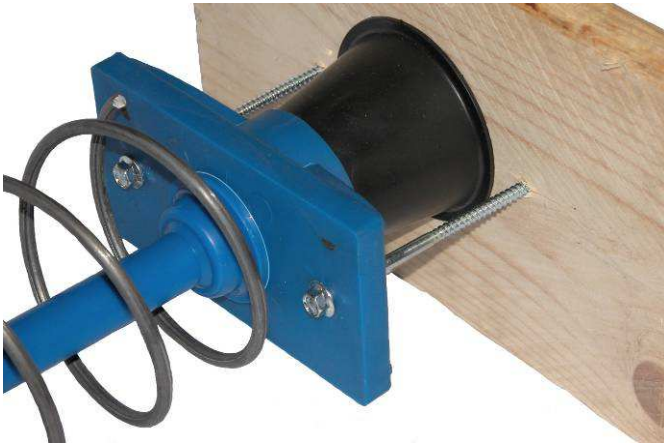


DD 7099B truncated cone pocket former

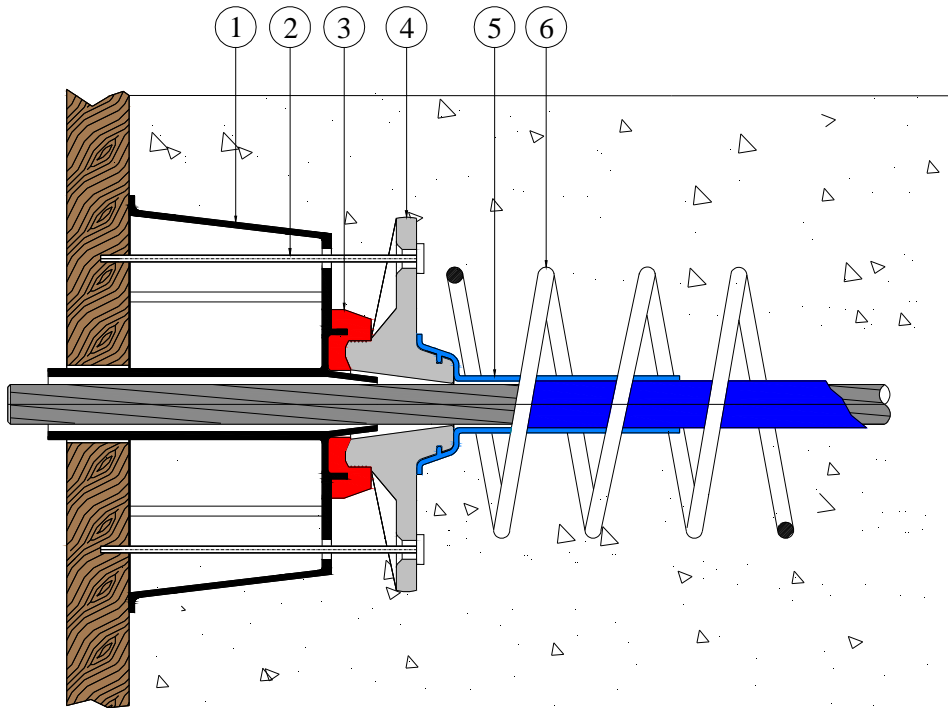
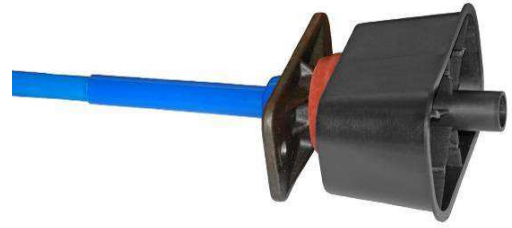


DD-1097A rectangular pocket former

Pocket formers are produced for single strand applications in order to create, by means of special reusable plastic moulds, recesses that allow sealing after anchorage tensioning. All pocket formers are mounted only on active anchorages applications.



**1E15-C and 1ED15-A unbonded anchorage with DD-1097A rectangular pocket former**



**Ref. 1** DD-1097A rectangular pocket former

**Ref. 2** fixing screws

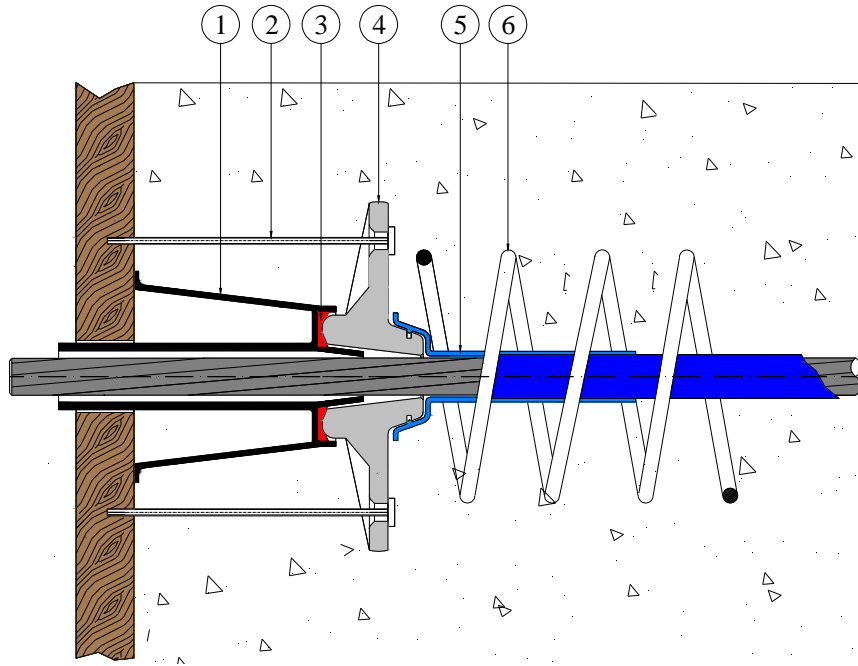
**Ref. 3** DD 1095GK sealing gasket

**Ref. 4** 1E15 steel anchor plate

**Ref. 5** rear connection

**Ref. 6** spring steel reinforcement

**1E15-B unbonded anchorage with DD 7099B truncated cone pocket**



**Ref. 1** DD-7099B truncated cone pocket former

**Ref. 2** fixing screws

**Ref. 3** DD 7025 sealing gasket

**Ref. 4** 1E15 steel anchor plate

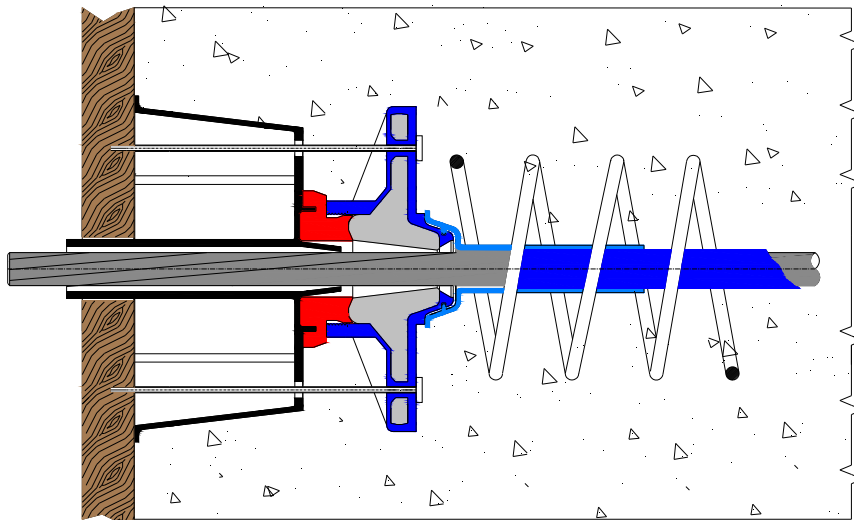
**Ref. 5** rear connection

**Ref. 6** spring steel reinforcement

**1EX15 unbonded anchorage  
with DD 1096GK gasket**

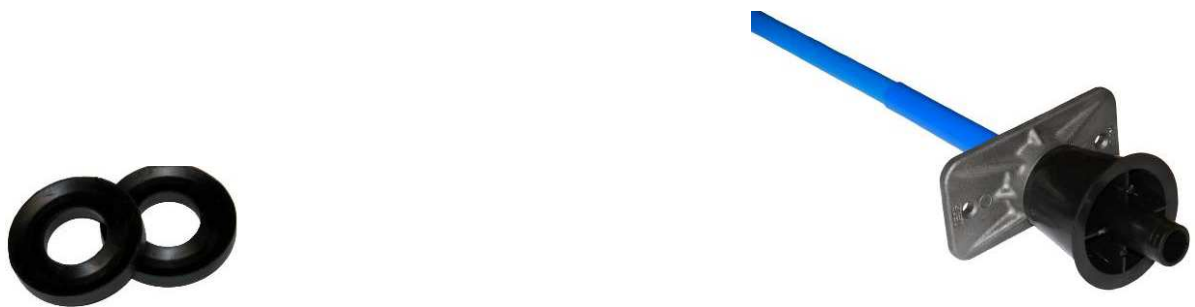


The DD 1096GK gasket allows to connect **1EXD15** and **1EX15** anchorages.



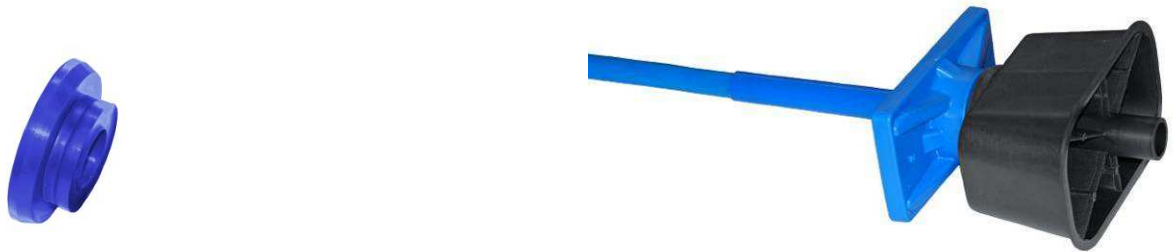
**1EX15** anchorage with rectangular DD-1097A pocket former and DD 1096GK sealing gasket directly applied onto the formwork.

Rectangular pocket former mounted on 1EX15 and 1EXD15 anchorage. They can be reused several times, and their correct application requires a proper gasket to guarantee sealing against any infiltration.



DD-1097A rectangular pocket former on 1EXD15 anchorage and DD 7025 sealing gasket

Rectangular pocket former mounted on 1EX15 and 1EXD15 anchorage. They can be reused several times, and their correct application requires a proper gasket to guarantee sealing against any infiltration.



DD-1097A rectangular pocket former on 1EXD15 anchorage and DD 1096GK sealing gasket

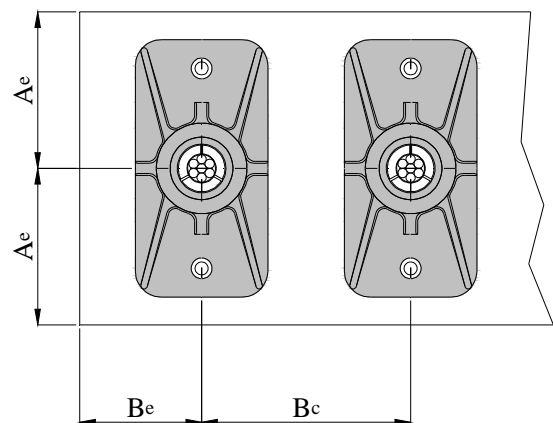
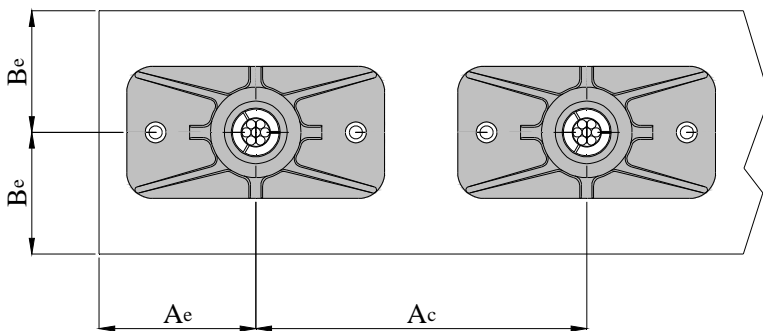
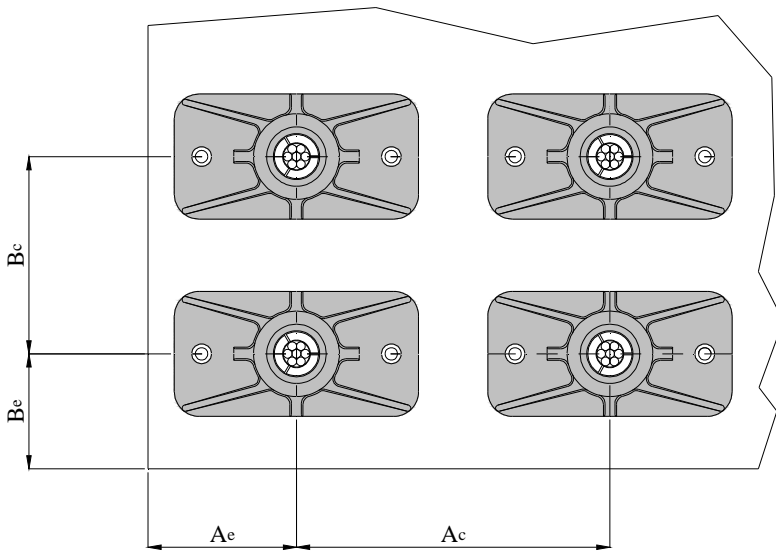
Rectangular pocket former mounted on 1E15 and 1ED15 anchorage. They can be reused several times, and their correct application requires a proper gasket to guarantee sealing against any infiltration.



DD-1097A rectangular pocket former on 1E15 anchorage and DD 1095GK sealing gasket

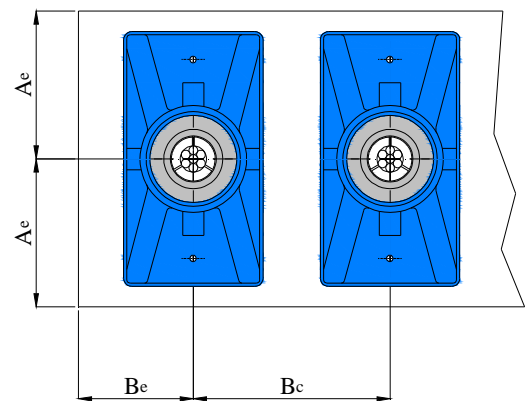
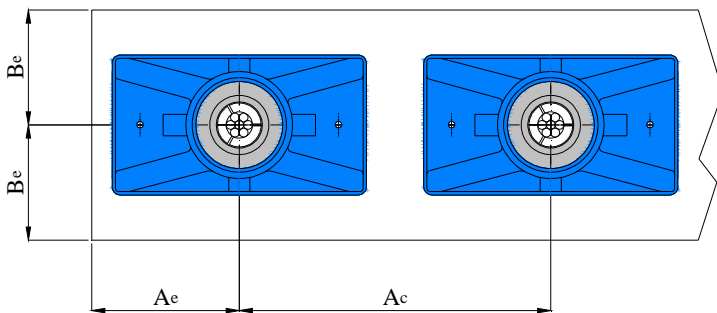
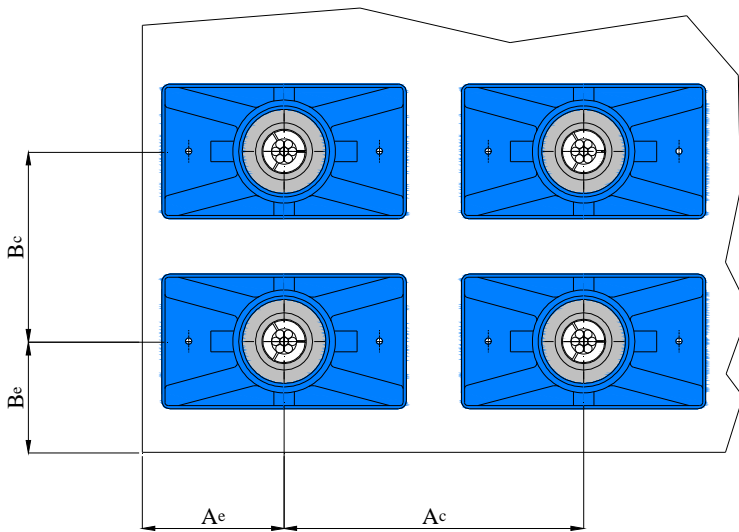


## E SINGLE STRAND ANCHORAGES: DISTANCE FROM EDGES



Distances from edges			
Minimum distance from anchorage to anchorage	$a_c$ [mm]	180	180
	$b_c$ [mm]	140	140
Minimum distance of anchorages from edges	$a_e$ [mm]	95	95
	$b_e$ [mm]	70	70

**EX SINGLE STRAND ANCHORAGES: DISTANCE FROM EDGES**



<b>Distances from edges</b>			
Minimum distance from anchorage to anchorage	$a_c$ [mm]	180	180
	$b_c$ [mm]	140	140
Minimum distance of anchorages from edges	$a_e$ [mm]	95	95
	$b_e$ [mm]	70	70