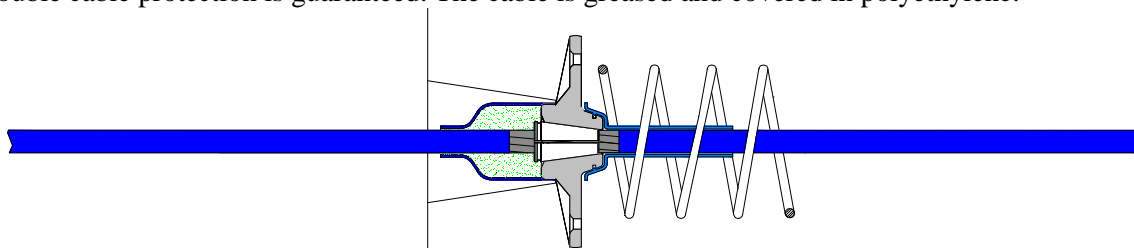




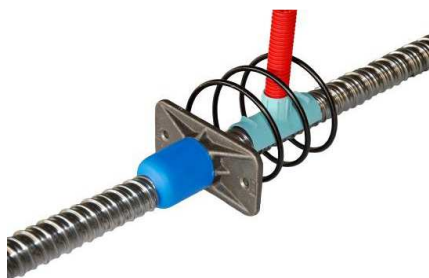
Application of "E" series anchorages for 1E15-B1 through strands (Through unbonded post-tensioning)



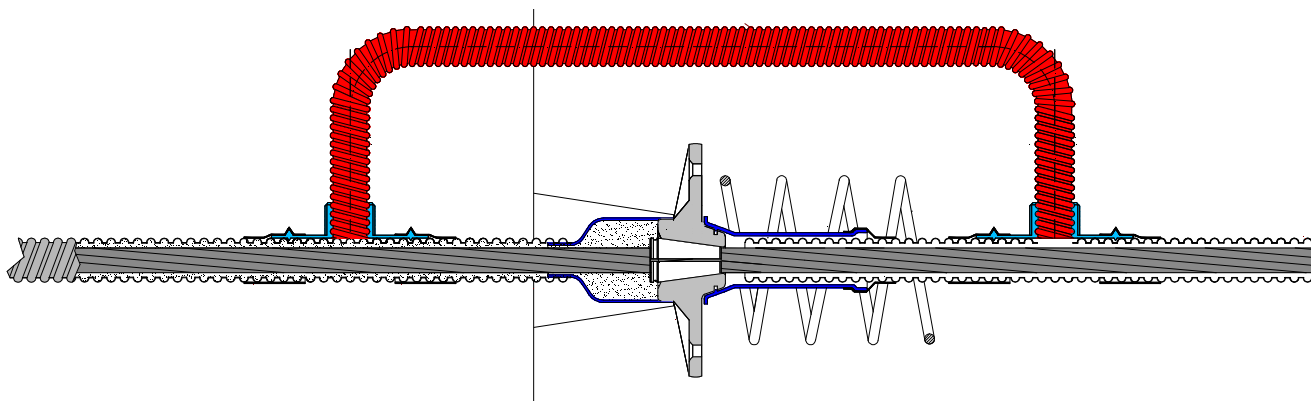
The anchorage: **active, unbonded and through, "1E15-B1" type**. It is provided with a wedge protection cap. The application allows to install unbonded single strand anchorages with through strand. The application is typical of industrial floors, diaphragms or continuous grouting slabs, where on a continuous cable several "1E15-B1" anchorages are installed in series. This solution requires special TTM 280KN tensioning jacks that can operate on a continuous cable. A double cable protection is guaranteed. The cable is greased and covered in polyethylene.



Application of "E" series anchorages for 1E15-B2 through strands (Through bonded post-tensioning)



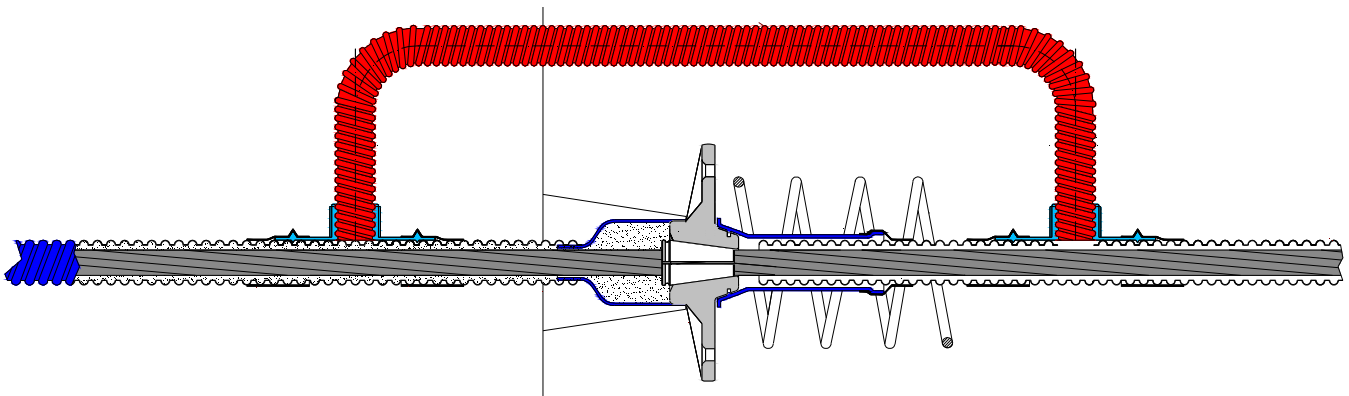
The anchorage: **active, bonded and through, "1E15-B2" type**. It is provided with a wedge protection cap. The application allows to install bonded single strand anchorages with through strand in an environment where a cable and anchorage corrosion protection is required, which only relies on the cement coverage of the components. The application is typical of industrial floors, diaphragms or continuous grouting slabs in an environment where water is present, and where on a continuous cable several "1E15-B2" anchorages are installed in series. This solution requires special tensioning jacks that can operate on a continuous cable. The cable is provided with a steel protection sheath, provided with proper grouting and vent points.



Application of "E" series anchorages for 1E15-B3 through strands (Through bonded post-tensioning)



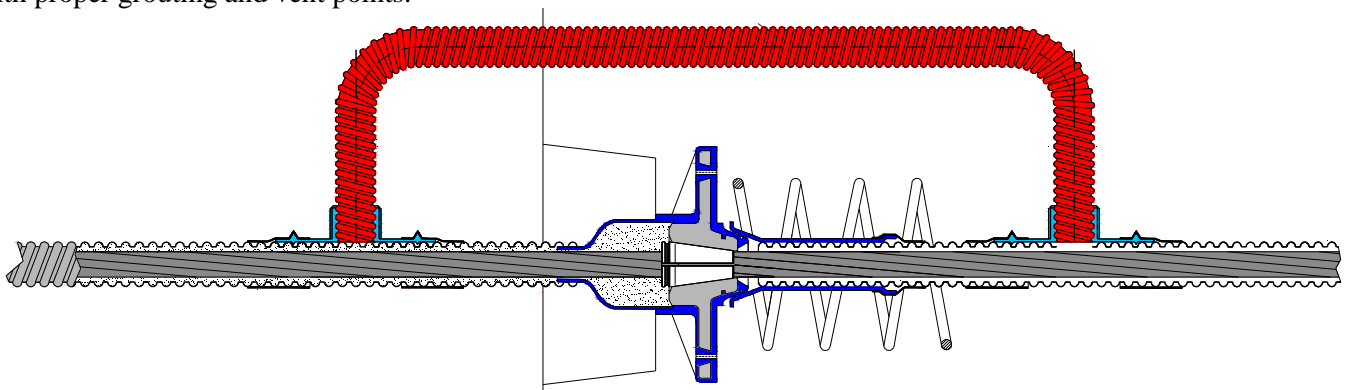
The anchorage: **active, bonded and through, "1E15-B3" type**. It is provided with a wedge protection cap., The application allows to install bonded single strand anchorages with through strand in an environment where a cable only corrosion protection is required by means of a polyethylene corrugated sheath. The application is typical of industrial floors, diaphragms or continuous grouting slabs in an environment where water is present, and where on a continuous cable several "1E15-B3" anchorages are installed in series. This solution requires special tensioning jacks that can operate on a continuous cable. The cable is provided with a polyethylene protection sheath on the whole length, which must be provided with proper grouting and vent points.



Application of "EX" series anchorages for 1EX15-B4 through strands (Through bonded post-tensioning)

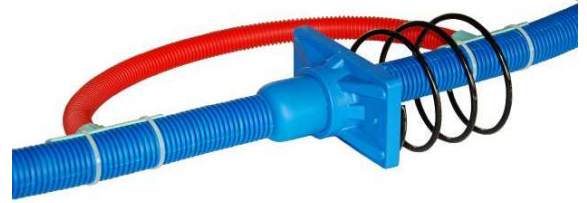


The anchorage: **active, bonded and through, "1EX15-B4" type**. It is provided with a wedge protection cap and the anchorage totally encapsulated with polyethylene. The application allows to install bonded single strand anchorages with through strand in an environment where a double anchorage only corrosion protection is required. The application is typical of industrial floors, diaphragms or continuous grouting slabs in an environment where water is present, and where on a continuous cable several "1EX15-B4" anchorages are installed in series. This solution requires special tensioning jacks that can operate on a continuous cable. The cable is provided with a steel protection sheath, provided with proper grouting and vent points.

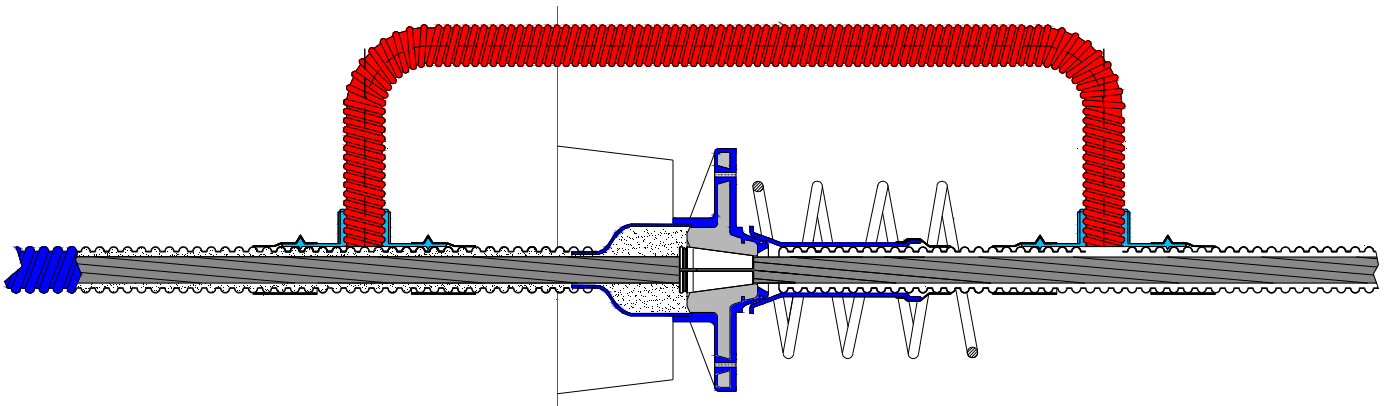


Application of "EX" series anchorages for 1EX15-B5 through strands

(Encapsulated through bonded post-tensioning)



The anchorage: **active, bonded and through, "1EX15-B5" type**. It is provided with a wedge protection cap and the anchorage totally encapsulated with polyethylene. The application allows to install bonded single strand anchorages with through strand in an environment where a double anchorage and cable corrosion protection is required (polyethylene encapsulation). The application is typical of industrial floors, diaphragms or continuous grouting slabs in a corrosive environment where water is present, and where on a continuous cable several "**1EX15-B5**" anchorages are installed in series. This solution requires special tensioning jacks that can operate on a continuous cable. The cable is provided with a polyethylene protection sheath, provided with proper grouting and vent points.



Application of "EX" series anchorages for 1EX15-B6 through strands

(Encapsulated through unbonded post-tensioning)



The anchorage: **active, encapsulated, unbonded and through, "1EX15-B6" type**. It is provided with a wedge protection cap and the anchorage totally encapsulated with polyethylene. The application allows to install unbonded single strand anchorages with through strand in an environment where a double anchorage and cable corrosion protection is required (polyethylene encapsulation). The application is typical of industrial floors, diaphragms or continuous grouting slabs in a highly corrosive environment, where on a continuous cable several "**1EX15-B2**" anchorages are installed in series. This solution requires special tensioning jacks that can operate on a continuous cable. The system is provided with an encapsulation on its whole length.

